

RIVER CAMPUS LIBRARIES | STRATEGIC PLAN | 2018-2025

VISION

With its unique and diverse expertise, collections and spaces, the River Campus Libraries provides transformational experiences for students and faculty to achieve their scholarly aspirations.

OUR VALUES

EQUITY AND INCLUSION

We serve as a nexus for community engagement, collaboration, and knowledge creation. We design services that dismantle barriers to equity and foster an inclusive environment where patrons and staff are comfortable authentically expressing themselves.

RESPONSIBILITY AND RESPECT

We steward the scholarly record, preserve the intellectual and cultural contributions of our community, and ensure access to vital resources. We cultivate mutual empathy and respect through our collections and services which support and enrich our community.

EVER BETTER

We innovate to advance excellence in teaching, learning, and research across the university. We commit our iconic spaces, high-quality services, and deep expertise to creative collaboration, open practices, and intellectual pursuits.

STRATEGIC AIMS

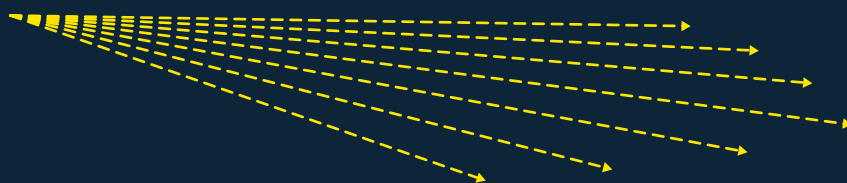
EXTENDING ACCESS TO COLLECTIONS

Phase I: 2018-2021

- Evolve library collections to reflect the values of diversity, equity, and inclusion
- Expand services and content that promote open scholarship to ensure access to the scholarly record
- Optimize technological infrastructures for library collections to support information discovery and scholarship

Phase II: 2021-2025

- Ensure the cultural and scholarly record is discoverable and preserved for future generations through research library collective action



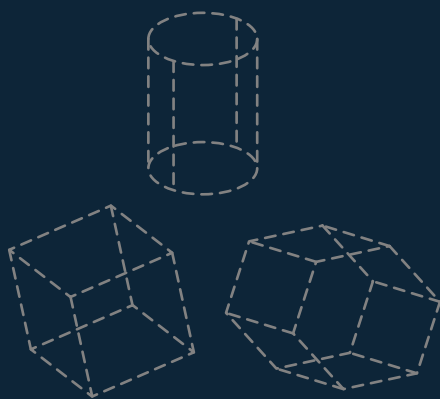
ENABLING SPACES

Phase I: 2018-2021

- As a nexus for programming and community, foster experiential learning, idea exploration, and skills development
- Improve the environmental quality of space to ensure the long-term preservation and responsible stewardship of collections
- Develop a holistic vision that equips the Science and Engineering Libraries to meet the evolving needs of students and faculty

Phase II: 2021-2025

- Realize the Rush Rhees Library Master Plan to ensure its ongoing relevance as a hub of innovation and center for knowledge creation



ENRICHING EDUCATION

Phase I: 2018-2021

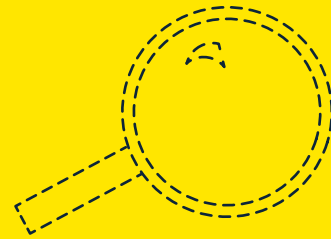
- Develop student mastery of information, data and digital fluencies, and critical thinking skills to help them become discerning thinkers and leaders in a democratic and global society
- Create open educational resources and practices to increase the accessibility of higher education
- Collaborate to develop experiential and community-engaged learning opportunities
- Bridge curricular gaps through the creation of research and technology skill development programs



ENHANCING RESEARCH

Phase I: 2018-2021

- Contribute to increasing the impact of the University's scholarship
- Collect and curate data and provide library-produced datasets to integrate into the University's data science research mission
- Inspire and nurture humanistic research through collaboration, targeted collection building, and the Digital Scholarship Lab



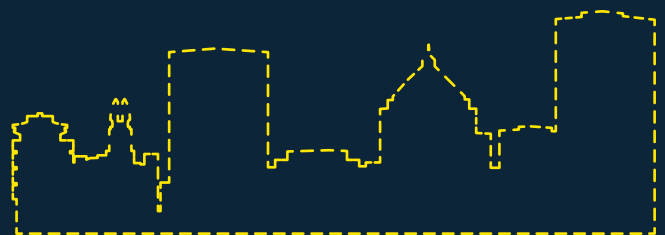
Phase II: 2018-2025

- Create a responsive and scalable library research support program to empower faculty and students in their innovative research and to share their work in inventive and high-impact ways
- Collaboratively invest in tools, resources, and infrastructures that will enhance the research enterprise

ENGAGING COMMUNITY

Phase I: 2018-2021

- Increase library staff from under-represented racial and ethnic groups to create a diverse workforce that mirrors the changing demographics of society
- Provide library staff with holistic, culturally sensitive professional development
- Cultivate alumni stewardship and support their lifelong learning and cultural and entrepreneurial aspirations by increasing access to scholarly resources



- Increase engagement with the broader community through the development of programs that leverage library expertise and collections
- Foster a culture of changemaking, innovation, problem-solving and entrepreneurship